

We Demand Green Social Housing

In California, every day we see how the affordable housing crisis and climate crisis are linked. Rent hikes that outpace our wages, rising utility bills that put people in debt, and the lack of affordable housing are all causing financial insecurity, displacement, and homelessness. This makes Californians more vulnerable to climate impacts and disasters, which are becoming more frequent and extreme. Climate disasters are fueling the housing crisis, as destructive wildfires, flooding, and sea level rise threaten homes and entire communities. Our current housing is also polluting our air and increasing carbon emissions, harming our health and worsening climate change.

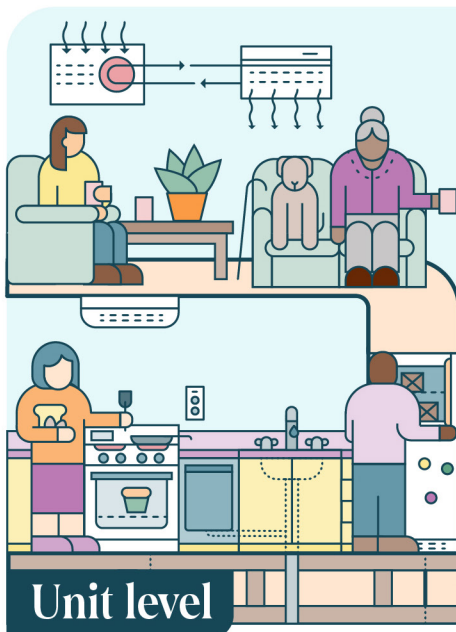


We are demanding green social housing to address the affordable housing crisis, create healthy homes, and to take land and housing out of the hands of for-profit corporations and into the hands of communities.

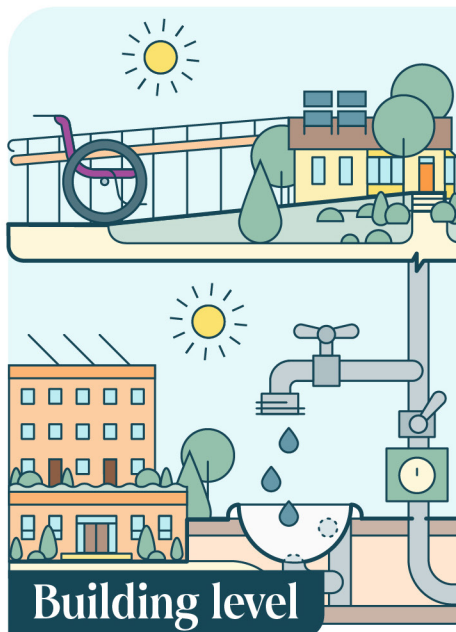
Green social housing

is housing that is permanently and deeply affordable, under resident control, and off of the real estate market. It creates healthy living spaces, sustainable buildings, and resilient communities.

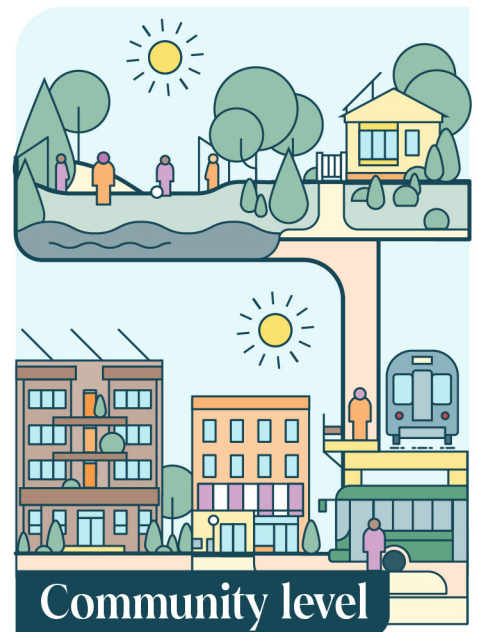
- **Permanently affordable.** Families and Individuals pay what they can actually afford in perpetuity.
- **Resident-controlled.** Residents are empowered to actively participate in managing their housing, instead of being at the whim of a profit-driven landlord.
- **Decommodified.** Residents are better protected because the properties are publicly, non-profit, or cooperatively owned. The land and the housing will never be put on the market for sale to the highest bidder, keeping it community-controlled for future generations.



- Comfortable and healthy living spaces that are toxic- and toxin-free
- Energy-efficient appliances and insulation
- Consistently maintained



- Decarbonized with modern appliances
- Climate-resilient & disaster-safe, including accessible design
- Built with sustainable materials



- Mixed-use buildings close to transit, services, stores, and community spaces
- Sited on safe, toxic-free land
- Paired with tenant protections to prevent displacement